

Peplink Balance One

Advanced Dual-WAN Router for Branch Networking.



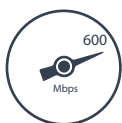
Works With



And 250+ USB Modem from Worldwide Carriers

One Huge Leap Forward for SMB, and Branch Networking.

The Balance One router with dual-WAN load balancing delivers big-business uptime and speed in an affordable package designed just for SMBs, branch offices, and power users. Featuring:



600Mbps Throughput. Dual WAN Support.

Drives data at 600Mbps and keeps connections dependable and fast with automatic balancing and failover between links.



Built-in AP Controller and InControl 2.

Built in AP Controller or InControl 2 cloud management puts you in charge of all connected access points, create and manage custom captive portals.



Simultaneous Dual-Band Wi-Fi. (Balance One Only)

Balance One (BPL-ONE) gives you two independent networks that also work together, so all your devices can connect without clashing. Recommended Concurrent Users Per Radio is 60.



Remote User VPN



QoS: Assign Priority



Eight GbE LAN Ports.

Connect all your devices at high speeds, without complicated setup, compromises, or external switches to buy and maintain.



Unparalleled Modem Support.

The Balance One's USB port supports more than 250 4G LTE/3G modems used by a variety of carriers worldwide.

Enterprise Features.

Connect remote clients to your private network using L2TP with IPsec, monitor Bandwidth Usage, allocate bandwidth for user groups, and more.

Setup, Manage, and Monitor Office Wi-Fi from Your Balance One

1 Provision AP One access points with the Balance One's built-in AP Controller

2 Web blocking keeps your staff out of unwanted websites and help them stay productive

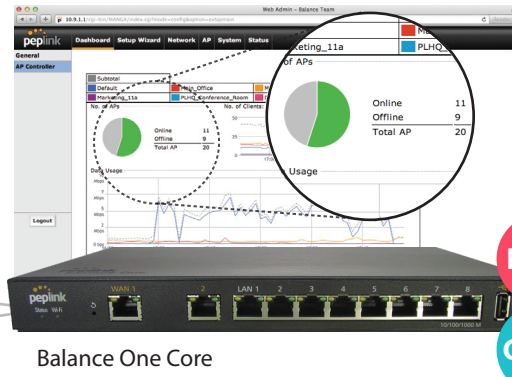
3 Get detailed access point usage reports anytime, right from your Balance One



AP One 300M



AP One In-Wall



Balance One Core

The AP One is available in a variety of configurations. Visit peplink.com/ap for details.



Connect Your Home Office with LTE Backup for 100% Uptime

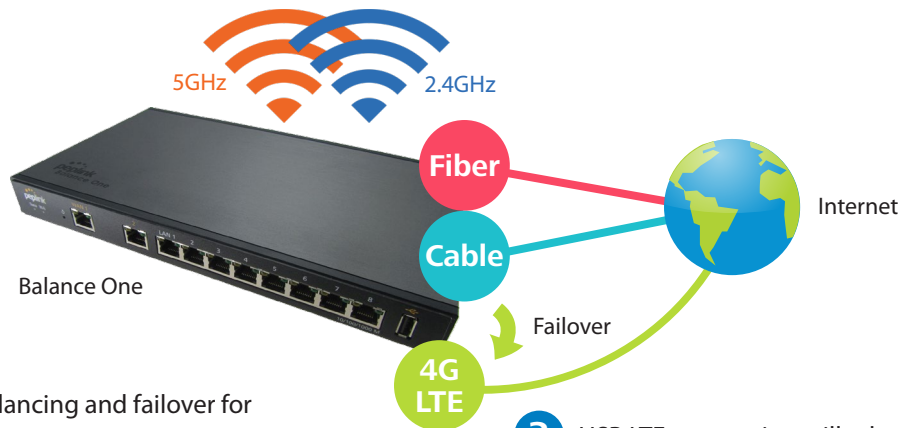
4 The Balance One has simultaneous dual-band 11n Wi-Fi for your wireless devices



Tablet
Smartphone

Laptop

1 600Mbps capacity for your blazing fast fiber Internet



Balance One

Internet

2 Dual-WAN load balancing and failover for unparalleled uptime

3 USB LTE connection will take place when Ethernet connections are down

Specifications

Balance One / Balance One Core

WAN Interface	2x 10/100/1000M Ethernet Ports 1x USB Interface
LAN Interface	8x 10/100/1000M Ethernet Ports
Wi-Fi Interface	Simultaneous Dual-Band 802.11a/b/g/n Access Point*
Wi-Fi AP Operating Frequency	2412 – 2472 and 5180 - 5825 MHz*
Router Throughput	600Mbps
Recommended Users	1-60
Number of VPN/SpeedFusion Peers	2
PepVPN/SpeedFusion Throughput	30Mbps
Power Input	Device: 12V – 24V DC AC Adapter: AC Input 100V – 240V, DC Output 12V
Power Consumption	15W (max.)
Dimension	1.2 x 10.7 x 6.3 inches 30 x 271 x 160 mm (H x W x D)
Weight	1.3 pound 570 grams
Operating Temperature	-40° – 149°F -40° – 65°C
Humidity	15% – 95% (non-condensing)
Certifications	FCC, CE, RoHS
Warranty	1-Year Limited Warranty

*Wi-Fi is available on Balance One(BPL-ONE) only.



Product Ordering Information

Product Code	802.11a/b/g/n AP	Dual-WAN	PepVPN	SpeedFusion Hot Failover/ SpeedFusion Bandwidth Bonding
BPL-ONE-CORE	○	●	●	Feature Add-On (BPL-ONE-LC-SF)
BPL-ONE	●	●	●	Feature Add-On (BPL-ONE-LC-SF)

Feature Add-On

Product Code	Applicable to	Description
BPL-ONE-LC-SF	BPL-ONE/BPL-ONE-CORE	SpeedFusion bonding license

Features

WAN

USB 4G/3G Modem Support
Support for PPPoE, Static IP, DHCP
Support for Dynamic DNS services
WAN Link Health Check
Intelligent Failover
Bandwidth Allowance Monitor

LAN

DHCP Server for LAN Clients
Extended DHCP Options
DHCP Reservation
DNS Proxy for LAN Clients
Per-Port VLAN

Security

Stateful Firewall
DoS Prevention

^ SpeedFusion is available as an optional add-on

AP Controller

AP Controller Support
Wi-Fi Usage Statistics

Complete VPN Solution

PepVPN/SpeedFusion ^
Site-to-Site VPN
Bandwidth Aggregation ^
Hot Failover ^
256-bit AES Encryption
Pre-shared Key Authentication
Dynamic Routing
L2TP with IPsec VPN Server
PPTP VPN Server
RADIUS, LDAP Authentication
IPsec VPN (Network-to-Network)

Load Balancing

Intelligent Failover
Session Persistence
Per-Service Load Distribution
Multiple Algorithms

Networking

NAT and IP Forwarding
Static Routes
Port Forwarding
Many to One, One to One NAT
NAT Pool
SIP ALG, H.323 ALG
UPnP, NAT-PMP
WINS Server

Advanced QoS

User Groups
Bandwidth Reservation
Individual Bandwidth Limit
Application Prioritization
By User Groups
SIP, HTTPS, VPN QoS
Custom Application QoS
Web Blocking Blacklist

Captive Portal Support

Support for Wired and Wireless LAN Clients
Support RADIUS Authentication
Time and Usage Quotas on Open Access Mode
Built-in Customizable Splash Page

Device Management

Web Administrative Interface
Command Line Interface
InControl Cloud Management
Email Notification
Active Client & Session Lists
Bandwidth Usage Statistics
Syslog Service
SNMP v1, v2c and v3

Package Content

Balance One/Balance One Core
12V Power Supply

